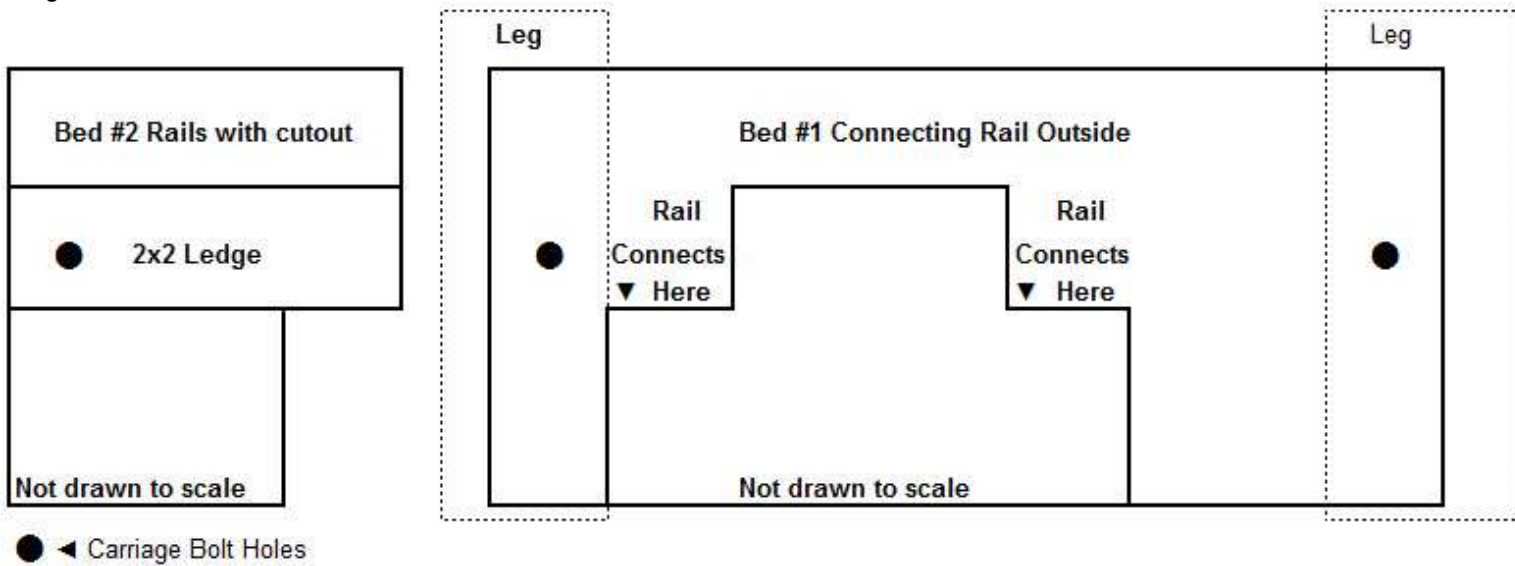


Fig. 4



The L-Shaped Loft Bed is a combination of two separate beds joined together with an opening between them. The beds have been identified as Bed #1 and Bed #2 when you placed your order. Bed #2 is joined to Bed #1 either on the Left or Right Side.

Fig. 1 shows the top down diagram of the beds with Bed #2 attached to the Left of Bed #1. If you are placing it on the right side you will just reverse the diagram. The diagram shows where the labeled rails are attached and where the safety rails are attached. There is also a special 2x6 bed slat provided that attaches Bed #2 to Bed #1 Connecting Rail. The rails for Bed #2 have a notch in them to attach to Bed #1 connecting rail.

Fig. 2 shows Bed #1 Connecting Rail and Bed #2 Rail. Fig. 3, in the corner where the two beds meet there is a 2x6 brace used to support the safety rails. This brace is attached to Bed #2 Rail with 2-1/2" screws from the inside of the rail into the brace. Basically wherever you see a pilot hole in a rail you can insert a 2-1/2" screw to connect the pieces. Fig. 4 shows a diagram of Bed #2 Rail with the cut-out and Bed #1 Connecting Rail.

Hint: First lay all the rails on the floor in the position of the final bed. This will help you visualize all the pieces and how they all fit together. Use 2-1/2" screws when attaching 1-1/2" thick boards and 1-5/8" screws for safety rails.

Assembly Instructions:

Step 1: You will first build Bed #1 following the normal assembly instructions with the labeled rails. Follow Fig. 1 for installing Bed #1 Back Rail Inside and Bed #1 Connecting Rail Outside. Do not install the safety rails at this time.

Step 2: Assemble Bed #2 end ladders. Attach Bed #2 end ladders to Bed #1 Connecting Rail by using Bed #2 Notched Rails. Attach the beds with 2-1/2" screws wherever there is a pilot hole in the rail.

Step 3: Attach the 2x6 Corner Brace (Fig. 3) to Bed #1 Connecting Rail from behind Bed #2 rail and behind Bed #1 Connecting Rail.

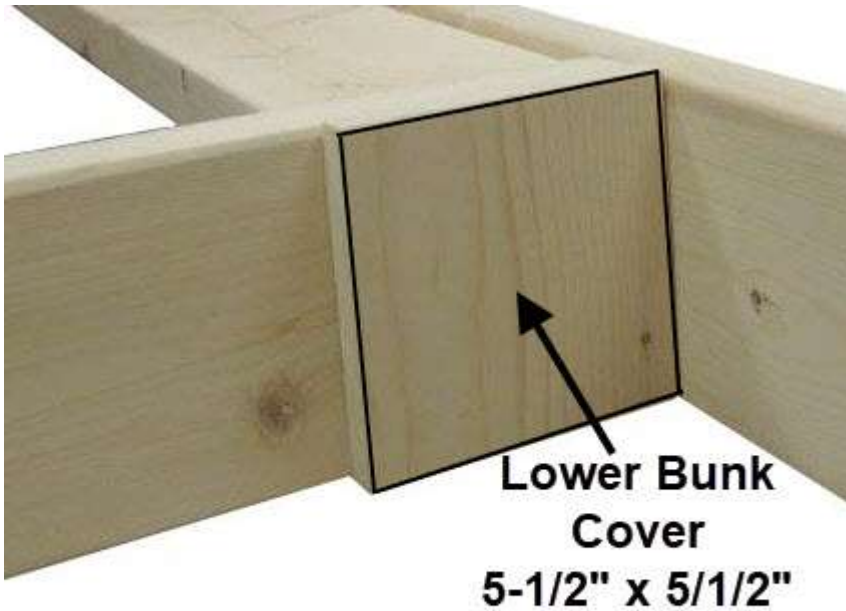
Step 4: Attach the 2x6 Bed Slat using 2-1/2" screws into all pilot holes. Install all the remaining bed slats following the normal assembly instructions.

Step 5: Attach the safety rails to both beds following the normal assembly instructions. There is also a Special Short Safety Rail for Bed #1 to attach to the Corner Brace.

You can now assemble any additional optional accessories you ordered.

L-Shaped Bunk / Bunk Lower Cover

If you have an L-Shaped Bunk / Bunk we will provide you with a board to cover the lower rails where they are attached to each other.



**Install with 2" screws from behind
the rail.**

Optional Headboard & Shelf Assembly

Please read through all the instruction pages first before performing any installation. The following pages show how everything fits together.

For L-Shaped Beds with the Optional Headboards, the Headboard Shelf and Slatted/Solid Headboards are customized for each bed. You will follow the normal assembly instructions for the Shelf and Headboard. Depending on your configuration we will send you pictures during our build process to identify your configuration and any unique assembly instructions. Please remember what Shelves and Headboards Slatted/Solid items you ordered. The shelves are Single, Double and Top Shelf. Labels are on the back of the Backboards/Headboard Slats to indicate what size screw to use and where to place them.

First install Bed #1 shelves following the normal assembly instructions. If multiple screws are required per board just use (1) screw to hold the board in place until everything is lined up properly. **Do not tighten** all shelf supports at this time as they might need to be slightly moved depending on the placement of Bed #2 items. For the Slats & Backboards start installation from the top working down. Use the 1/2" spacer we provided you for the gap between the boards. For the double shelves install the bottom shelf first then the upper shelf. Place pencil marks on the legs where the Shelf Supports are located to line up Bed #2 notched boards.

This picture shows the final configuration for both beds with Slatted Headboards and Double Shelves on both beds. Keep in mind Bed #2 may be on the Right (as shown in the picture below) or Left of Bed #1.



Bed #1 Back



For Bed #2 you will have additional vertical Posts to support the shelves. They are labeled Bed #2 Headboard Front Post and Bed #2 Headboard Back Post. Attach them with 2-1/2" screws from inside the rail into the post.



Install Bed #2 Headboard and Shelves following the normal assembly instructions from the top down.



This shows the back of Bed #2 Headboard & Shelves and where they meet Bed #1 shelves. Please note that some boards are notched around Bed #1 Shelf Supports.



You may now completely tighten all screws.