

Long, L-Shaped & U-Shaped Desk Assembly Instructions

Updated: 5/22/15

Long Desktop

The Long Desktop goes underneath the loft and across the back. Maximum weight capacity is 40 lbs. It comes in 2 pieces (long and short side) which needs to be glued and assembled prior to attaching to the loft bed.

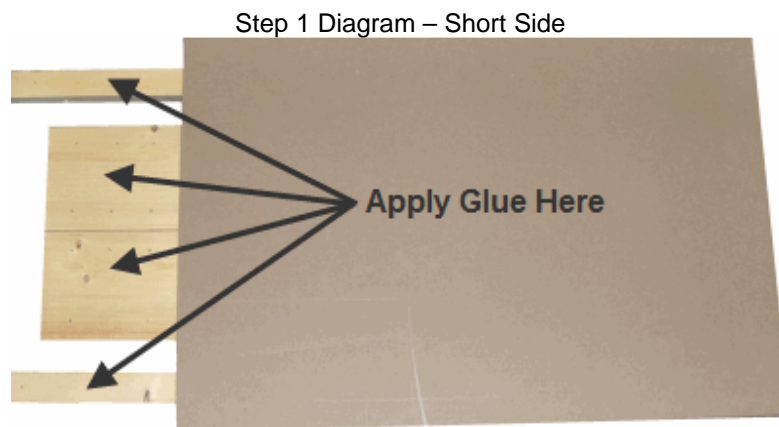
Before starting assembly wipe away any sawdust that may still be on the desktop pieces.

Long Desktop Parts List

(2) Desktops 3/4" x 20" (2) 2x2x38" Inner Rails (18) 2½" Screws (22) 1-5/8" Screws
(1) Desk Support 2x4 x 76" (regular), 81" (XL) or 85" (XXL)

Step 1

Lay the shortest desktop piece face up as in the picture shown below. Apply glue to center support and support rails. Spread glue evenly across all pieces.



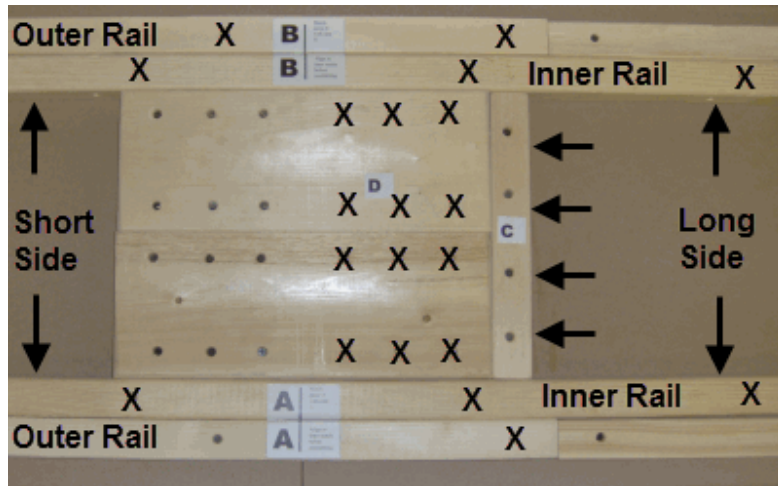
Step 2

- 1) Lay the longer desk side face down on a long flat surface and place the glued side face down, make sure the edges line up.
- 2) Insert the 2x2x38" inner rails marked A and B (this will ensure the desktop will line up together properly in the next step).
- 3) Using (4) 2½" screws (shown as arrows below), fasten C to D (this will tighten the two tops together).
- 4) Using (12) 1-5/8" screws (shown as X's below), fasten D to desktop (don't go too deep or the screws will come through the other side).
- 5) Using (2) 1-5/8" screws (X's) fasten the outer rails to the long desktop piece.
- 6) Remove the 2x2x38" pieces and place glue on the bottom side and on the side facing the outer rail. Reinsert the 2x2x38" inner rails lining up A to A and B to B.
- 7) Use (8) 1-5/8" screws (X's) to fasten the 2x2x38" inner rails to the bottom of the desktop (again don't go too deep or the screws will come through the other side).
- 8) Using (4) 2½" screws (arrow) to fasten the inside of the inner rails to the outer rails A to A and B to B.
- 9) The top is now complete. Let the desktop lay flat until the glue dries (about 2 hours).

Note: If a screw does come through the top of the desk surface, back the screw out enough to go just below the surface of the desktop then use fine grit sandpaper to gently smooth the bump out.

Step 2 Diagram

Note: Arrows represent 2½" screws which go into the side of each piece, X's represent 1-5/8" screws which attach the supports the top piece.



Step 3

Please Note: If you have a Long Shelf you must attach that before attaching the Long Desk.

For the Long, L-Shaped and U-Shaped Desks you must first assemble the complete desk and then install it on the bed.

Install the 2x4 support at the height of the second rung with (4) 2-1/2" screws at each end into the legs (Step 3 Diagram). The 2x4 support sometimes due to temperature and humidity differences may be slightly warped. This will typically correct itself when it is attached to the back legs. The slight warping will not be noticeable and will not affect the stability.

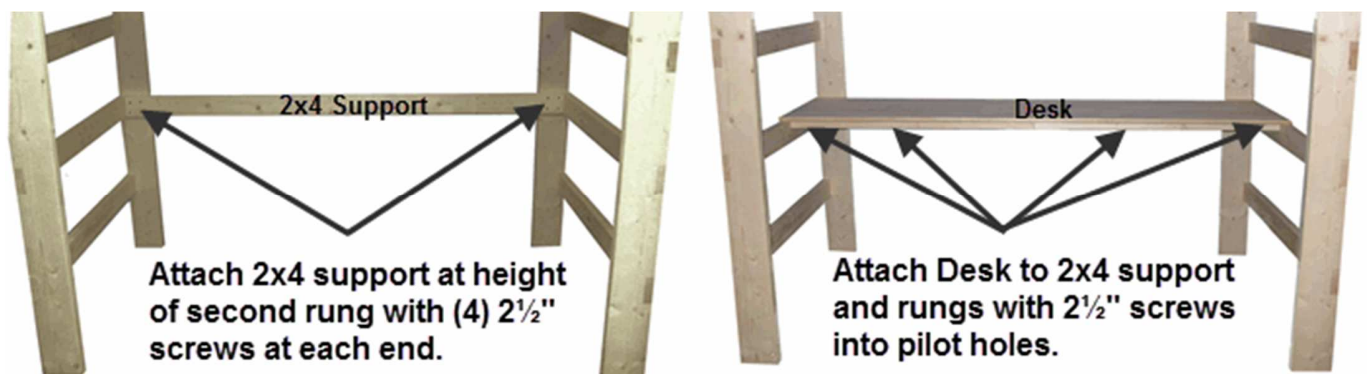
Once the desk glue has had time to dry (about 2 hours), mount the desktop to the second rung (from the bottom) of the loft. If you are right handed, you would place the short side on the left, if you are left handed, you would place the short side on the right. The desk will be supported by the Rungs at each and the 2x4 Support at the back.

The desktop will be heavy and extra help may be needed to place the desktop on the rungs.

Once placed on the second rung, attach the desktop to the rungs by using (4) 2½" screws through the end support pieces (2x2) into the second rung, (2) 2½" screws per side to secure the desktop to the rungs and to the back 2x4 Support.

If the long desk doesn't fit exactly between the rungs you can move the legs in or out slightly to make it fit.

Step 3 Diagram



L-Shaped & U-Shaped Desk Assembly Instructions

Photo-1 L-Shaped Desk Bottom View

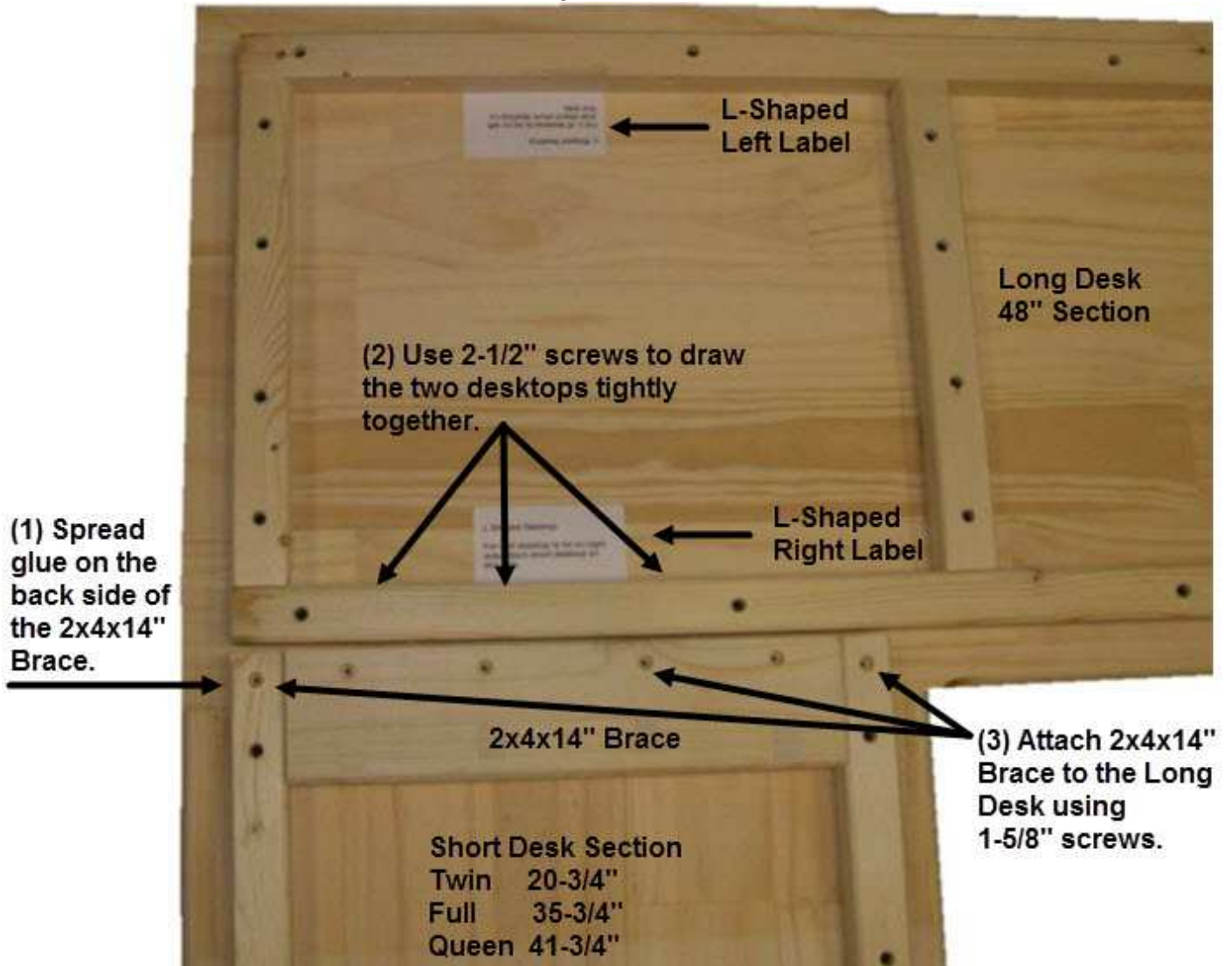
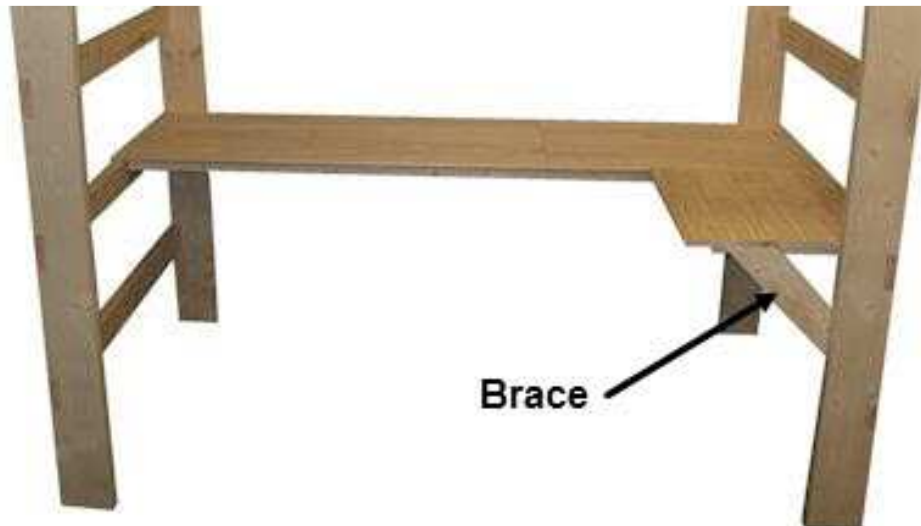


Photo-2 Right L-Shaped Desk Top View



Hint: You will need 2 people to continue assembling the desk. The desk will be heavy and extra help will be needed to place it on the rungs. Lift the desk very carefully and do not put any pressure on the joints in the desk.

The L-Shaped & U-Shaped Desks are a combination of the Long Desk and Short Desk attached together. The L-Shaped Short Desk may be installed either on the left or right side. Photo-2 shows a Right L-Shaped Desk.

The Long Desk comes in two pieces, the one piece is 48" long and the other piece is shorter depending on the length of your bed. On the back of the 48" section will be a label showing where to attach the Short Desk piece to make either a Left or Right L-Shaped Desk. The 48" piece will have a flat edge where the Short Desk will attach to. For the U-Shaped Desk there will be a flat edge at each end on the long desk where the short sections will be attached to. The center portion of the long desk will have a rounded edge and the back will have a flat edge.

Assemble the long desk as normal using instructions included with loft assembly instructions. Place the long desk on the loft between the second rungs (from the bottom). If it is a tight or loose fit you can move the legs in or out to place the rungs tight against the desk support piece.

Step (1) On the Short Desk Section spread glue over the attaching surface area 2x4x14" Brace (Photo-1) and the short ends of the 2x2's. Basically spread glue anywhere underneath where the two wood pieces will be attached. Slightly lift the long desk flat edge and place the Short Desk Section underneath the Long Desk and line up the back and top to make them even. During this step slide the short desk left to right slightly once it has been placed on the long desk to help evenly spread the glue.

Step (2) Line up the two pieces making sure the tops of each piece are flush with each other and there is no gap between them. If you have a clamp you can use it to hold the pieces together. Once the desktop pieces have been lined up, use (3) 2-1/2" screws in the predrilled holes to draw the desktop pieces tightly together (Photo-1). Please note if while attaching the screws if the pieces slightly separate, you need to slowly back-out the screw from the attached piece and then re-screw is back in. This will draw the two pieces tightly together.

Make sure the tops of both pieces line up



Step (3) Use (6) 1-5/8" screws in the Brace and Rails support to further attach the Short Desk to the Long Desk. Be sure not to drive screws in too deep as they will protrude through the top of the desk. If a screw does go through the top just back it out until it is below the surface and use a small piece of sand paper to smooth the area.

Step (4) Attach the right or left Angle Brace to the L-Shaped end of the desktop (Photo-2). Make sure the desktop is level. Attach the Angle Brace to the desktop and to the leg with 2-1/2" screws.

If you are assembling a U-Shaped Desk you can now install the other side exactly the same.

Now attach the desk by following the Long Desk Assembly Step 3 instructions.

Let the desktop glue dry for at least 4 hours before adding any weight to the desk.